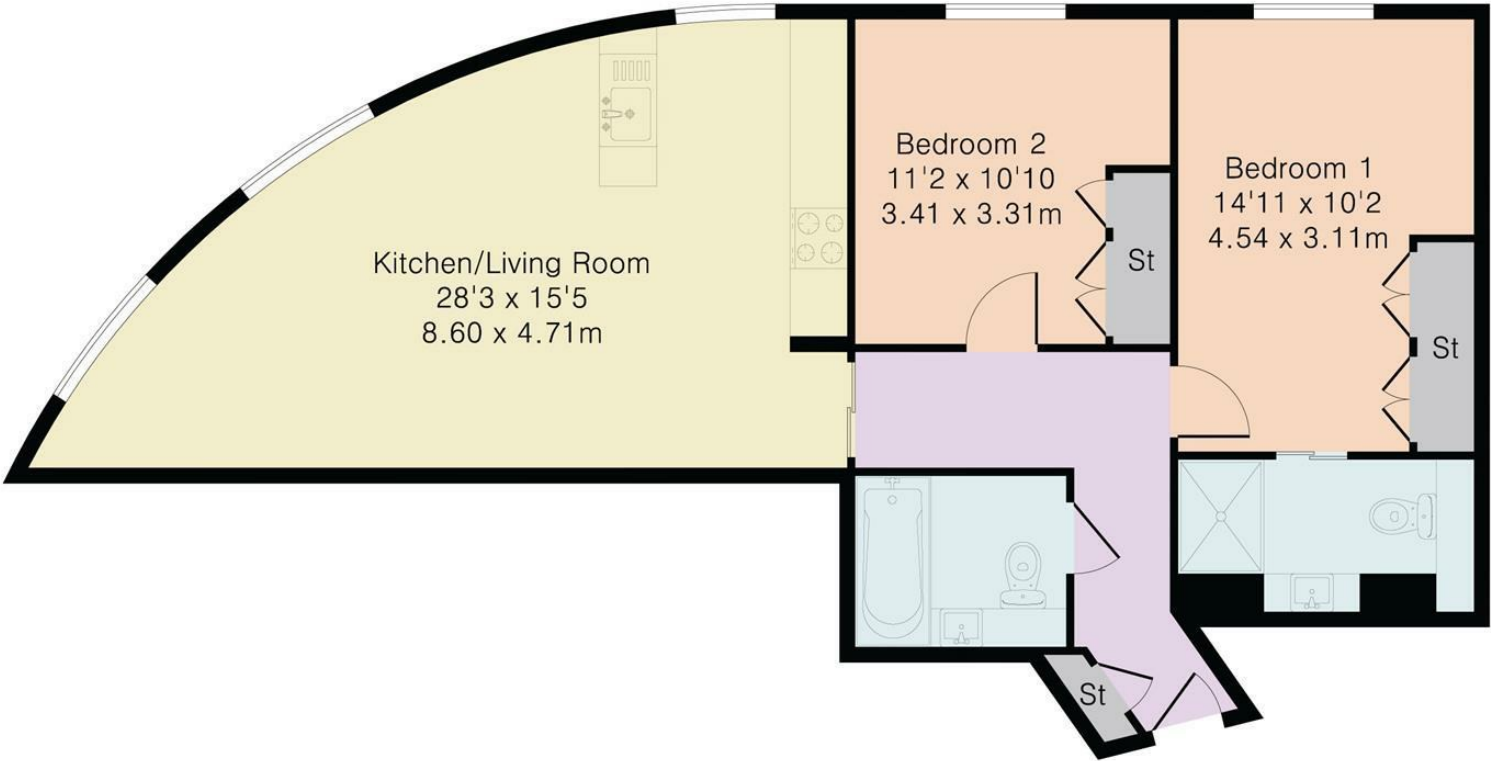


Approximate Gross Internal Area 791 sq ft – 73 sq m

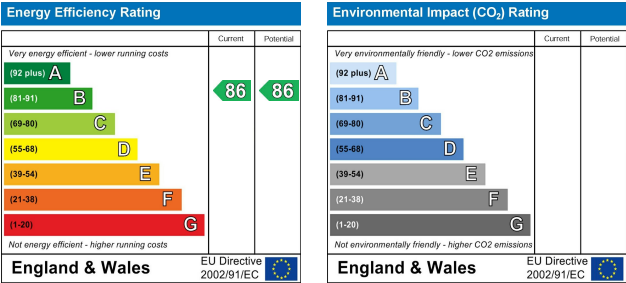
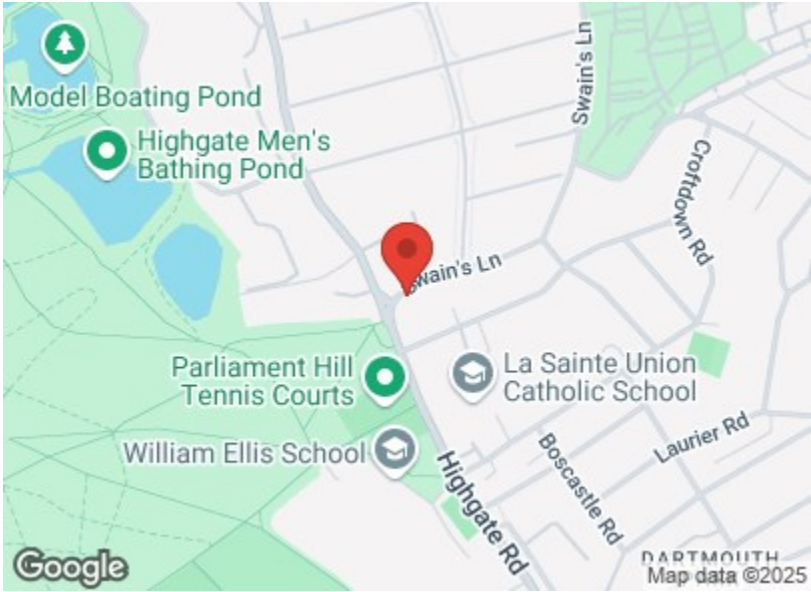


Swains Lane  
N6 6AG  
Chain Free £800,000

Built (2019) is this two bedroom, two bathroom first floor apartment within a modern lift serviced development located within a stones throw of Parliament Hill fields. The apartment features two double bedrooms with built-in storage and one with an en suite shower room, a modern open plan kitchen/reception and a family bathroom. A PARKING BAY COULD BE AVAILABLE BY SEPARATE NEGOTIATION.

Swains Lane offers an abundance of local shops and eateries as well as close proximity to the acres of open parkland that is Hampstead Heath.

Several bus routes are opposite the property as well as Gospel Oak Overground, Kentish Town, Tufnell Park & Archway Underground Stations (Northern Line) are all a short distance away.



Service: It is not our company policy to test services and domestic appliances so we cannot verify that they are in working order. The buyer is advised to obtain verification from their solicitor or surveyor. These particulars are offered on the understanding that all negotiations are conducted through this company. Neither these particulars nor oral representation form part of any offer or contract and their accuracy cannot be guaranteed.



Swains Lane, London N6 6AG

